

KATELLA

Box Pack Specifications



SATIN NICKEL



MATTE BLACK

AVAILABLE FUNCTIONS:



Passage



Privacy



Entry



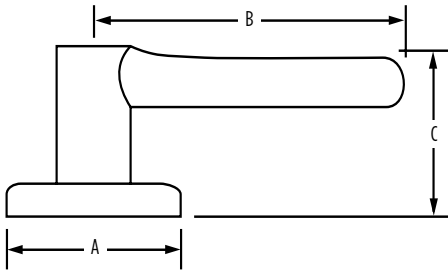
Inactive

KATELLA	15 Satin Nickel	514 Matte Black
Passage	<input type="checkbox"/>	<input type="checkbox"/>
Privacy	<input type="checkbox"/>	<input type="checkbox"/>
Entry	<input type="checkbox"/>	<input type="checkbox"/>
Inactive	<input type="checkbox"/>	<input type="checkbox"/>



SPECIFICATIONS

Door Prep	Cross Bore 2-1/8" Edge Bore 1" Latch Face 1" x 2-1/4"
Backset	Adjustable to 2-3/8" or 2-3/4"
Door Thickness	1-3/8" - 1-3/4" doors standard. 2-1/4" doors optional
Cylinder	SmartKey
Faceplates	1" x 2-1/4". Includes square corner, radius corner and drive-in
Strikes	2-1/4" full lip. Includes square corner and radius corner
Bolt	1/2" throw. Nickel plated
Door Handing	Reversible for right or left-hand doors
ANSI/BHMA	A156.2 Grade 2
ADA	Functions GLA 101, GLA 12 satisfies section 4.13.9 ADA Requirement
ASTM	All Weiser product meets ASTM E 331 water penetration testing



Dimensions	A	B	C	C (Keyed)
Katella	2 1/16"	4 1/4"	2 15/32"	2 9/16"

WARRANTY:

Weiser™ products provide a "Lifetime Mechanical Warranty" that covers all defects in material and workmanship. For more information, please visit ca.weiserlock.com/en/warranty/.